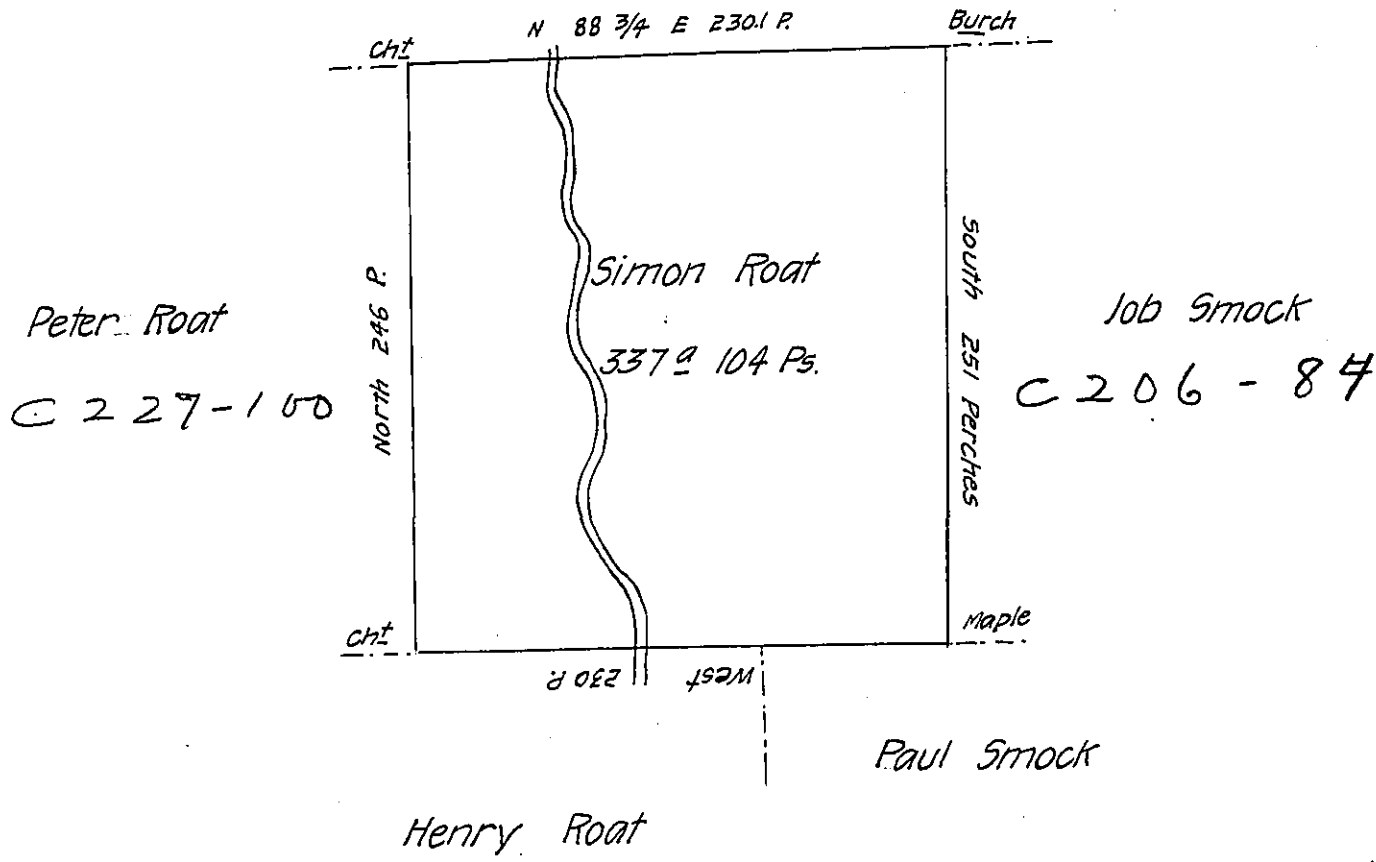


District Line



Situate on the east side of French Creek in Allegheny County  
 Containing 337.95 104 perches & allowance of six Per Cent for  
 roads &c Surveyed the 29<sup>th</sup> day of May 1795 in pursuance of a  
 warrant dated the 10<sup>th</sup> day of Aprile 1793

W<sup>m</sup> Power D<sup>y</sup> S<sup>c</sup>

To Daniel Brodhead Esq<sup>t</sup>  
 Surveyor General.

IN TESTIMONY that the above is a copy of the original remaining on file in  
 the Department of Internal Affairs of Pennsylvania, made  
 conformably to an Act of Assembly approved the 16th day of  
 February, 1833, I have hereunto set my Hand and caused  
 the Seal of said Department to be affixed at Harrisburg,  
 this seventh day of March 1907

*Isaac B. Brown*  
 Secretary of Internal Affairs.